

4 New Street, Mildenhall, Suffolk, IP28 7EN
Tel: 01638 712132
mildenhall@shiresestateagents.co.uk
www.shiresresidential.com

shires

Estate & Letting Agents



Eldo Road, West Row, Suffolk, IP28 8PY

Rent - £1,150 PCM

Deposit - £1,326

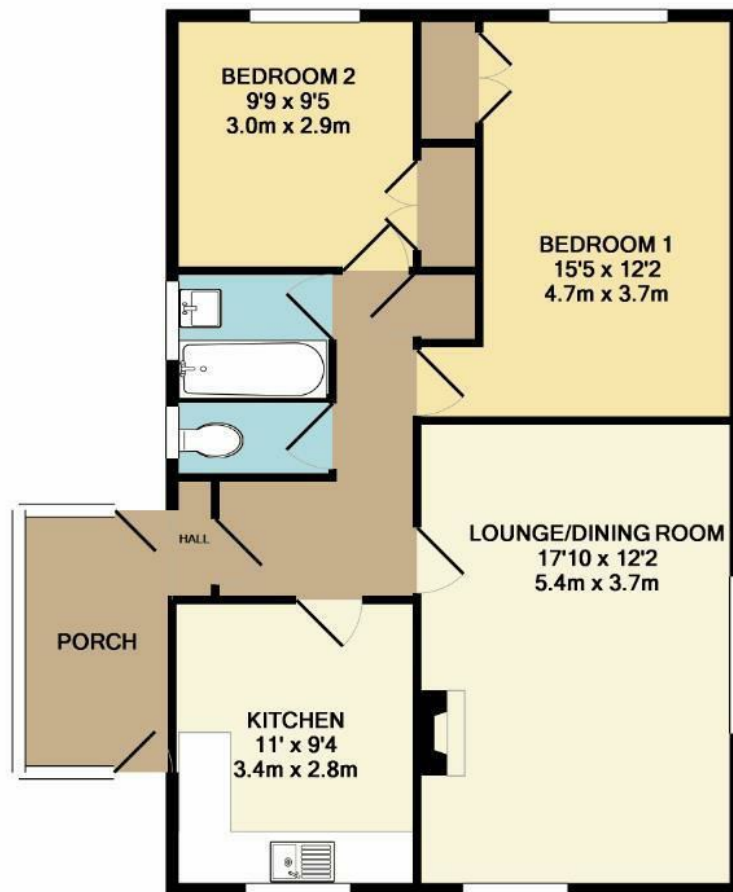
A spacious and well-presented detached bungalow located in the popular village of West Row, just a short distance from RAF Mildenhall. This modern home offers generous living space and is ideal for those seeking a quiet residential setting with easy access to local amenities.

The property features two double bedrooms, both with built-in wardrobes that provide excellent storage. A large lounge and dining area offers plenty of room for both relaxing and entertaining. There is a well-appointed family

- DETACHED BUNGALOW
- 2 DOUBLE BEDROOMS
- SPACIOUS LOUNGE
- BATHROOM & SEPERATE W.C
- AMPLE PARKING & A LARGE GARDEN
- CLOSE TO RAF BASES
- OIL HEATING & ENERGY RATING - E
- APPROXIMATE SIZE - 772 SQ FT
- PETS CONSIDERED
- AVAILABLE NOW



Council Tax Band: C - EPC Rating: E 45



TOTAL APPROX. FLOOR AREA 772 SQ.FT. (71.7 SQ.M.)

Whilst every attempt has been made to ensure the accuracy of the floor plan contained here, measurements of doors, windows, rooms and any other items are approximate and no responsibility is taken for any error, omission, or mis-statement. This plan is for illustrative purposes only and should be used as such by any prospective purchaser. The services, systems and appliances shown have not been tested and no guarantee as to their operability or efficiency can be given
Made with Metropix ©2018

